

N.W. Cor Sec 22, T18N, R68W

062660

RECEIVED  
LARAMIE COUNTY  
CHEYENNE, WY.

CERTIFIED LAND CORNER RECORDATION '89 OCT 5 PM 3 59

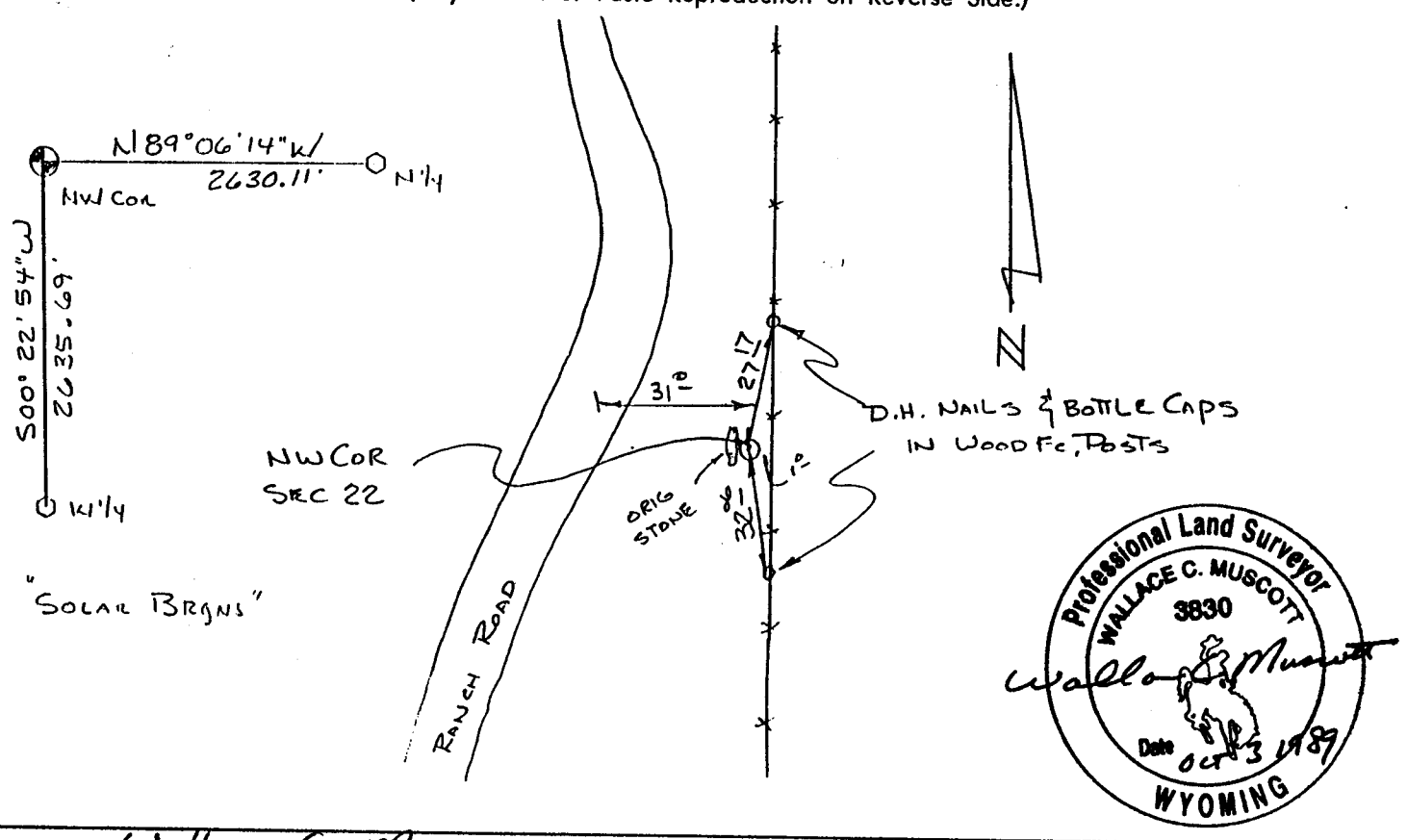
DESCRIPTION OF CORNER EVIDENCE FOUND, AND ORIGINAL RECORD (if known)

FOUND ORIG. GRANITE STONE, 17"x14"x4" w/(3) = CHISEL MARKS ON SOUTH EDGE & (2) = VISIBLE CHISEL MARKS ON EAST FACE. ACCEPTED AS THE ORIGINAL STONE.

DESCRIPTION OF MONUMENT AND ACCESSORIES ESTABLISHED TO PERPETUATE THE ORIGINAL LOCATION OF THIS CORNER:

IN PLACE OF ORIG STONE, SET A 5/8" x 30" REBAR w/ CORPS OF ENGRS BRASS CAP STAMPED T18N, R68W S16/S15 FLUSH w/ GROUND. PLACED ORIG STONE S21/S22 ALONG W. EDGE & RAISED A MOUND OF STONE 1989 TIED OFF AS SHOWN BELOW. MAY 15 1989

SKETCH, WITH COURSE AND DISTANCE TO ADJACENT CORNER IF DETERMINED IN THIS SURVEY. (May Sketch or Paste Reproduction on Reverse Side.)



I, Wallace C Muscott certify that I have carefully performed or reviewed the work done on the diagrammed corner as reported on this recordation form and approve the same.

Wallace C. Muscott 3830  
Signature of Surveyor Registration No.

STATE OF WYOMING,  
Office of Clerk and Recorder,  
County of \_\_\_\_\_

This "corner record" was filed for record on the \_\_\_\_\_ day of \_\_\_\_\_, 19\_\_\_\_, was noted on the cross-index plat and is assigned page No. \_\_\_\_\_, in book No. \_\_\_\_\_.

County Official			
Cross Index No. <u>N-13</u>	T. <u>18N</u>	R. <u>68W.</u>	Mer. <u>6th</u>
_____	T. _____	R. _____	Mer. _____
_____	T. _____	R. _____	Mer. _____
_____	T. _____	R. _____	Mer. _____
_____	T. _____	R. _____	Mer. _____
_____	T. _____	R. _____	Mer. _____
_____	T. _____	R. _____	Mer. _____